



REGIONAL PRESS RELEASE

Huge investment brings fertiliser supply reassurance to local farmers

Farmers across the North of England, Borders and Southern Scotland will soon benefit from an improved fertiliser supply chain thanks to a significant new infrastructure investment from the Port of Tyne and Origin Fertilisers.

The combined £7.5m project on the Port of Tyne site for a new blending plant and dedicated 6,000m² fertiliser warehouse will allow Origin to produce and store more than 100,000 tonnes of fertiliser. This will offer farmers and growers across the region better access to the right crop nutrition during the busy spring period.

The outlay demonstrates Origin's plan to improve the availability and supply of fertiliser across the area and further reinforces the company's commitment to better fertiliser supply on a local level. Origin's managing director, Michael Pater, says the investment is a significant enhancement for the region.

"Our new facility is located port-side and gives direct access to deep sea vessels, which will be a major improvement to the region in accessing raw materials from further afield, providing a wider range of product sourcing and competitive pricing.

"This investment will continue to improve and benefit Origin Fertilisers' ability to provide prescription nutrition to farmers across the North East and southern Scotland. Providing farmers and growers with access to locally produced, prescription fertiliser helps them meet the challenges of sustainable farming by using the right fertiliser, at the right rate, at the right time and in the right place."

The new facility complements Origin's existing sites in Silloth, Immingham, Ayr and Montrose, to supply fertiliser to Northern England, the Borders and Southern Scotland.

The project is now at the final stage of installing a new modern, state of the art, fertiliser blending plant. This will enable a full range of secondary and micro-nutrients, along with fertiliser additives, to be added to the fertiliser to match specific crop and animal requirements on an individual farm and field basis. Completion of the site is planned for early October.

Significant investment

Port of Tyne's Head of Estates, Victoria Beattie, added: "This significant investment not only enhances the agricultural supply chain for farmers and growers in our region and beyond, but also brings economic and environmental benefits. Approximately 15 new jobs will be created, as well as the regional position of the site set to reduce road miles of around 5,000 lorry loads of fertiliser. This partnership aligns with our commitment to positively impact the local economy, and we look forward to Origin's new site being fully operational."

Strong local team

To support the site, Origin has already invested in the team across the region, giving farmers on-hand support to make the most from the new facility.

Joining Northumberland-based nutrition agronomist Abby Kellett, Origin strengthened its local team with appointments of two additional staff members – Hester Hardy, covering Yorkshire and north of England and Julia Andrews covering the Borders and Scotland.

Hester explains the site is going to be a valuable resource in the future: "There is huge scrutiny on fertiliser use in agriculture and farmers need to be as efficient as possible when applying crop nutrition. The blender at Port of Tyne can produce a full range of fertiliser blends matched to soil and crop requirements, so all the fertiliser applied will be accessed and used by the crop, reducing potential environmental losses. As the site is more local, there is the added benefit of less CO₂ emissions from transporting the fertiliser to farm."

Mr Pater concluded: "We are confident that the Port of Tyne facility and purpose-built store, along with our nutrition agronomy team providing farmers in the local area with the latest nutritional advice, will be a huge benefit for farmers and growers across the North East and Scotland."

-Ends-

26 July 2024

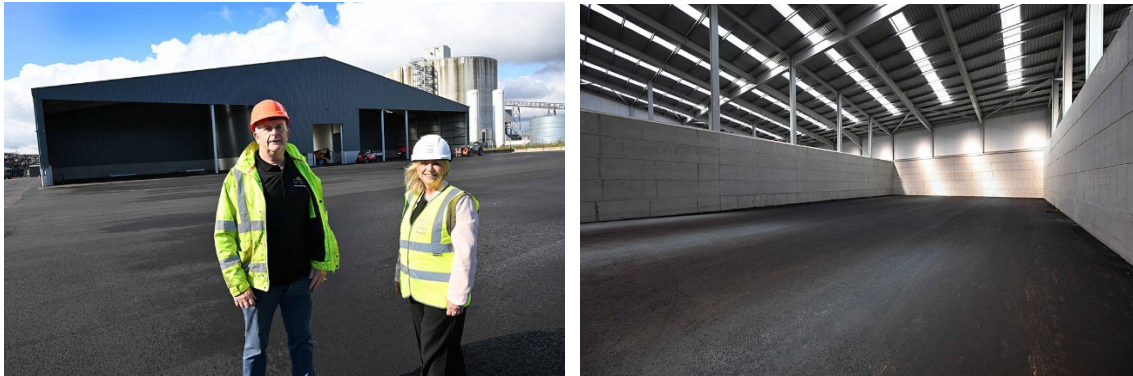


Image: Port of Tyne site

Caption: Port of Tyne Head of Estates, Victoria Beattie, and Origin Fertilisers Operations Director, Andy Bell, at the new site that has capacity to produce and store more than 100,000 tonnes of fertiliser.



Caption: Origin nutrition agronomist, Hester Hardy

Notes to editors:

- Origin Fertilisers is a national manufacturer and distributor of fertiliser with 11 production facilities across Great Britain and headquarters in Royston, Hertfordshire.
- Origin has over 18,500 products to help arable and grassland farmers make better use of fertiliser – both financially and environmentally – by using targeted prescription fertilisers to improve soil fertility and crop productivity. Targeted nutrition (with a known carbon footprint) can have a significant impact on helping farming reach sustainability goals.
- A team of regional in-house nutrition agronomists offer practical advice to growers on ways to improve their crop nutrition and fertiliser usage.

Contacts:

Mandy McAulay
Marketing manager, Origin Fertilisers
mandy.mcaulay@originfertilisers.co.uk

Edd Mowbray
Agribusiness Communications
edd@abccomms.co.uk
07534 650401

About Port of Tyne

Port of Tyne is one of the UK's major deep-sea ports, delivering bespoke solutions for the green energy sector, supporting world leaders in the automotive transition, handling specialised bulk and containerised products, alongside delivery logistics, and assisting growing passenger numbers via the regionally important International Passenger Terminal. Overall, Port of Tyne adds over £720m to the North East economy, supporting over 11,000 jobs directly and indirectly and as one of the UK's largest trust ports, is entirely self-financing and runs on a commercial basis, reinvesting all its profits back into facilities along the River Tyne for the benefit of the North East and all its stakeholders.

Media contact:

portoftyne@o.agency / 0191 232 5690